

Grenville Gardens

By

Nesma Al Sherif

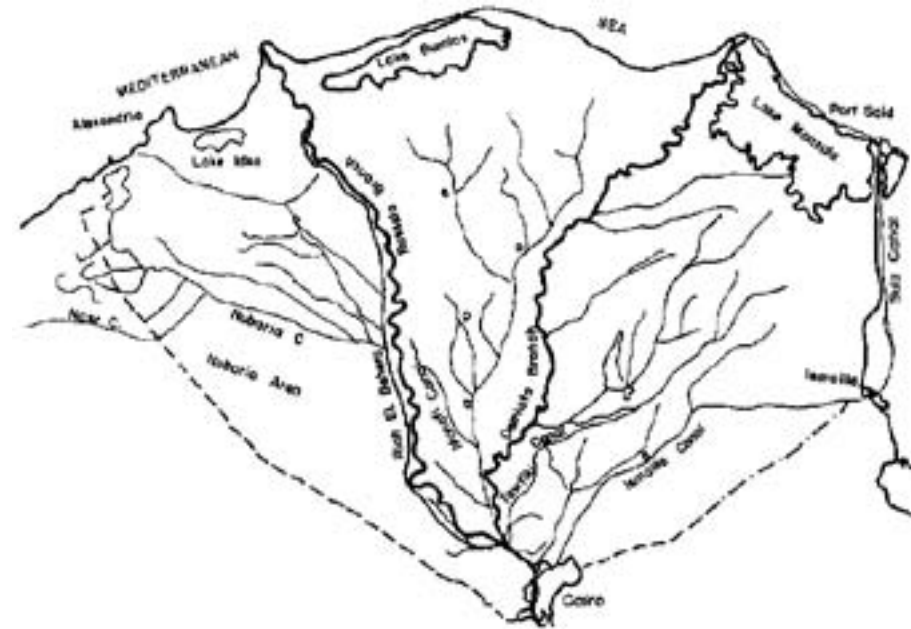
Grenville Gardens, Islington



The River Nile & Delta



River Nile and Delta



The branches of the delta spreading the water



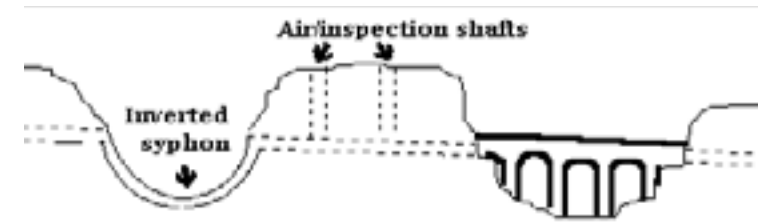
Agricultural land on the Nile banks



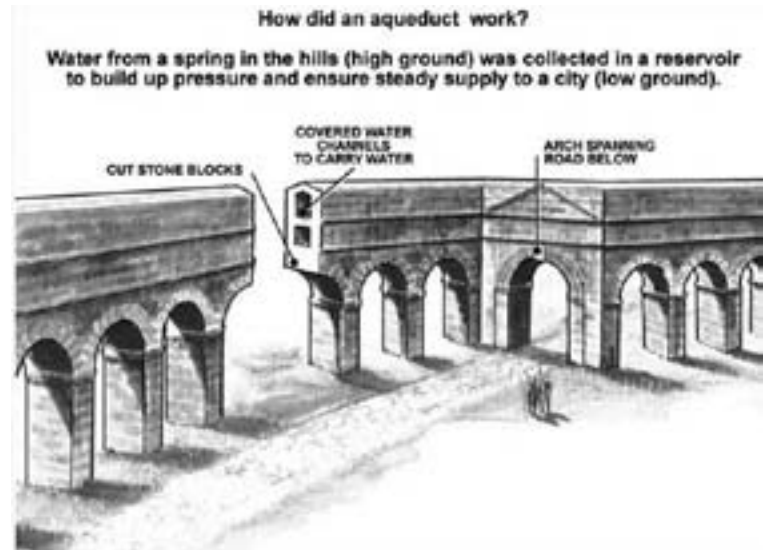
Farmers branching out the water to reach the whole plot

Aqueducts

An aqueduct is a channel or pipe used to transport water from a remote source to a desired location, such as a town, city, or agricultural area. The simplest, most primitive form of aqueduct was used in Egypt, Assyria, and Babylon. It consisted of nothing more than an open canal dug between the river and the city. Water from the river flowed into the city by the force of gravity.



A Roman Aqueduct



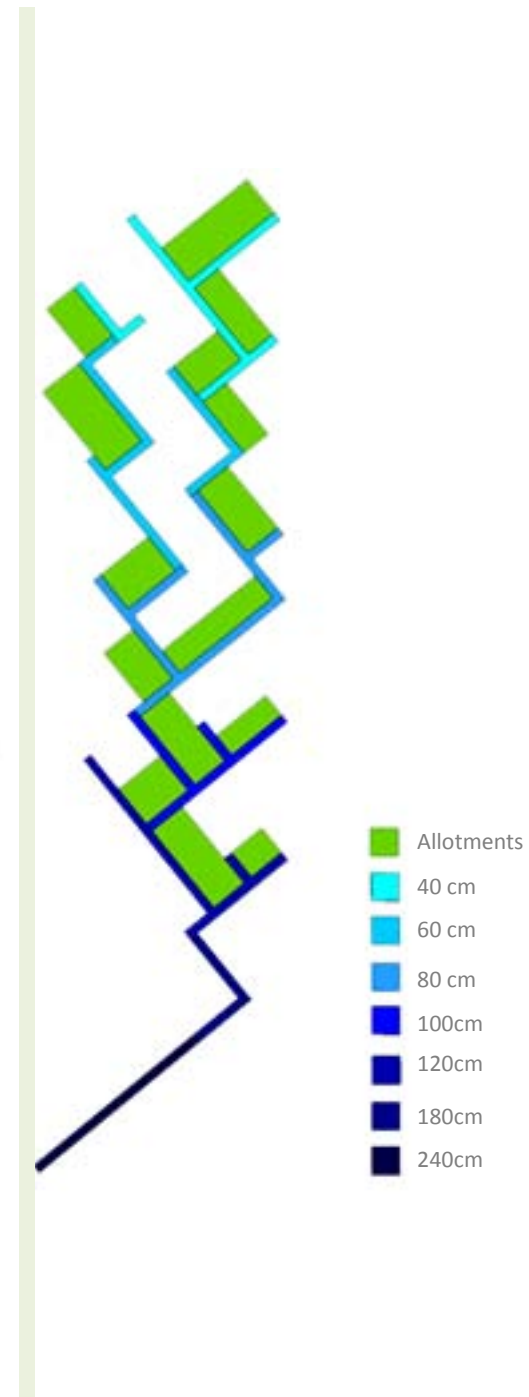
Strategy

The aqueducts will be built using wood. They start from the water source at a height of 2.40 meters and descends to 1.80 meters and so on until it reaches the lowest height which is 40cm.

The allotments will be located starting from the branch with the height of 120 cm.

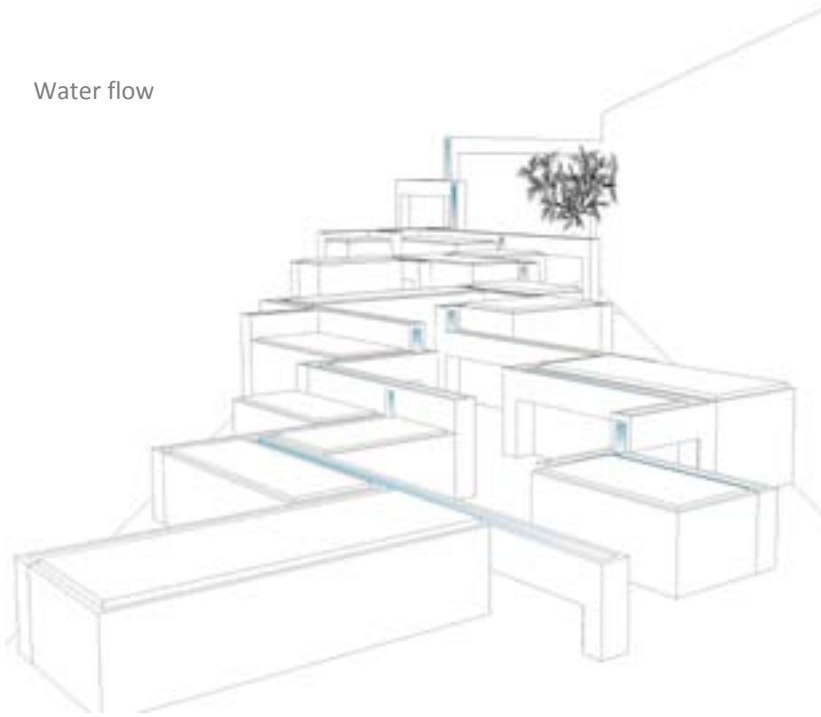
All branches are perpendicular in order to make it easier for individuals to build their own allotments.

Every individual who wishes to sign up for an allotment will reserve a slot, take its measurements, build his allotment and locates it in his slot.

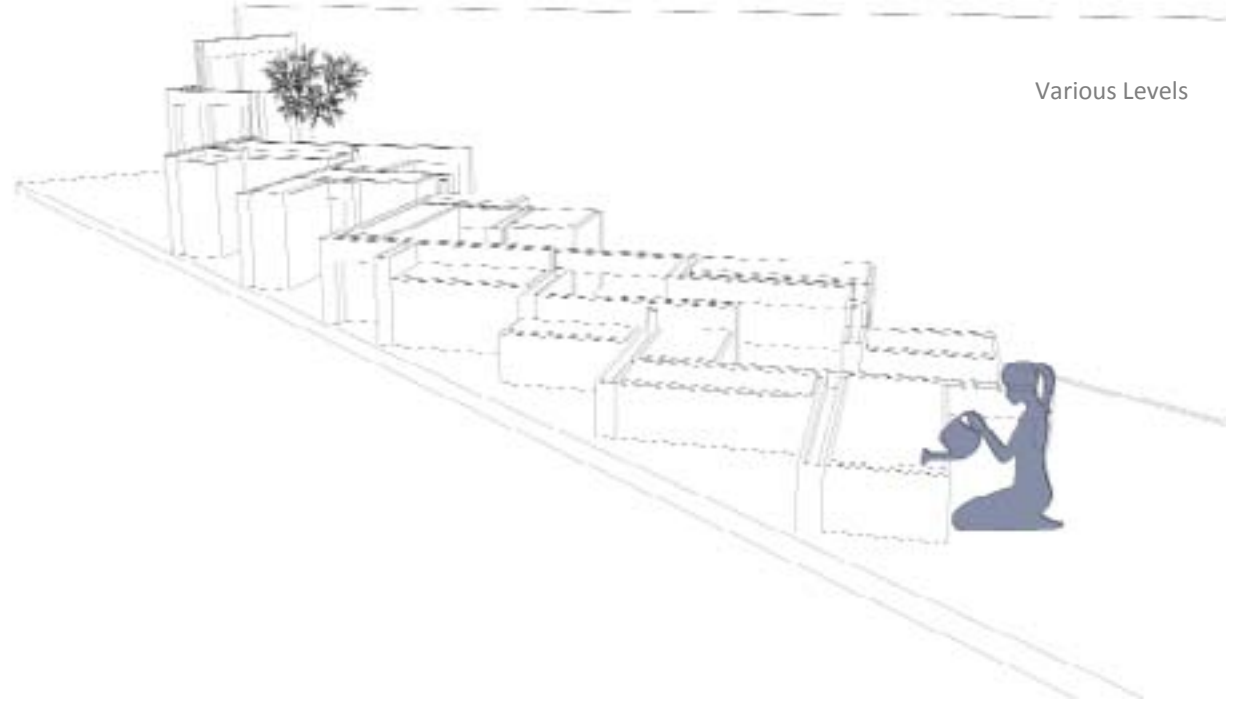


Visuals

Water flow



Various Levels



Elevation

