

_bottom up design build

Elisa Kautto

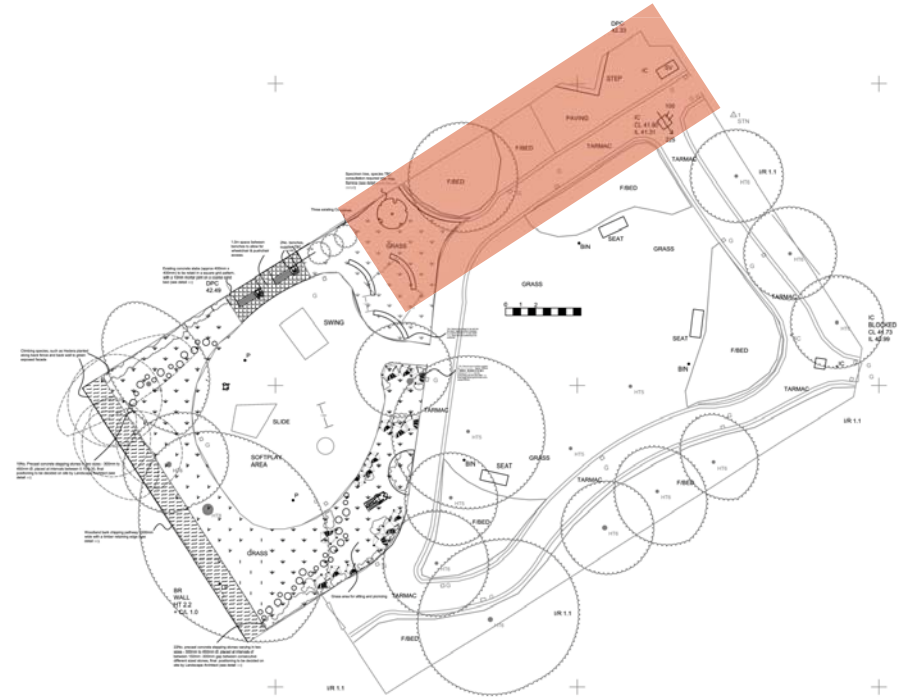


_site

Grenville Road Gardens
Islington, London

FIRST IMPRESSIONS:

- _clean
- _well maintained
- _neat



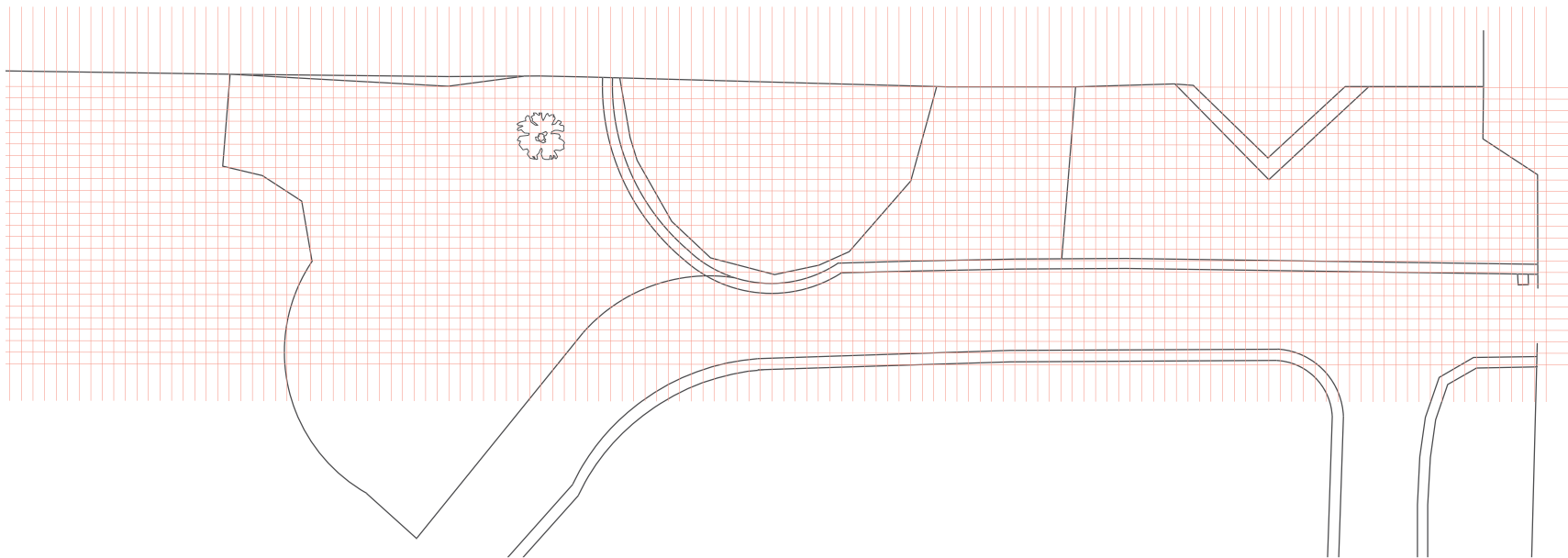
_precedent study

Awaji Yumebutai by Tadao Ando



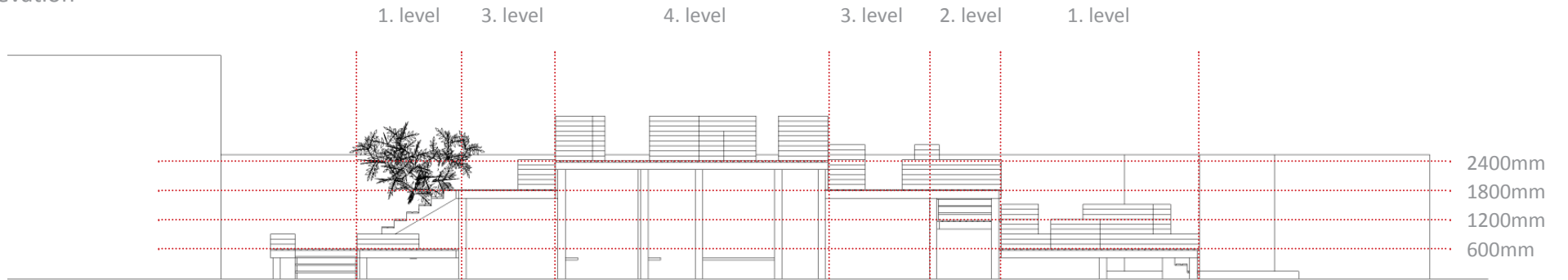
_concept

250mm x 250mm grid on plan

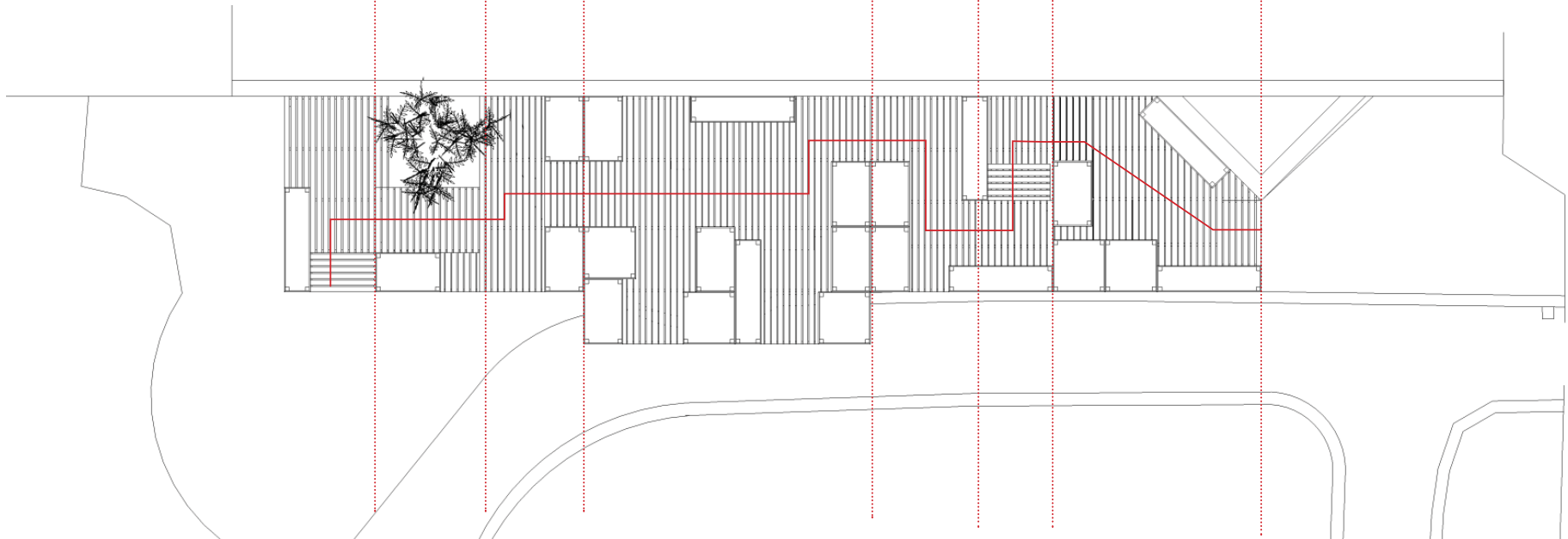


_plan

front elevation

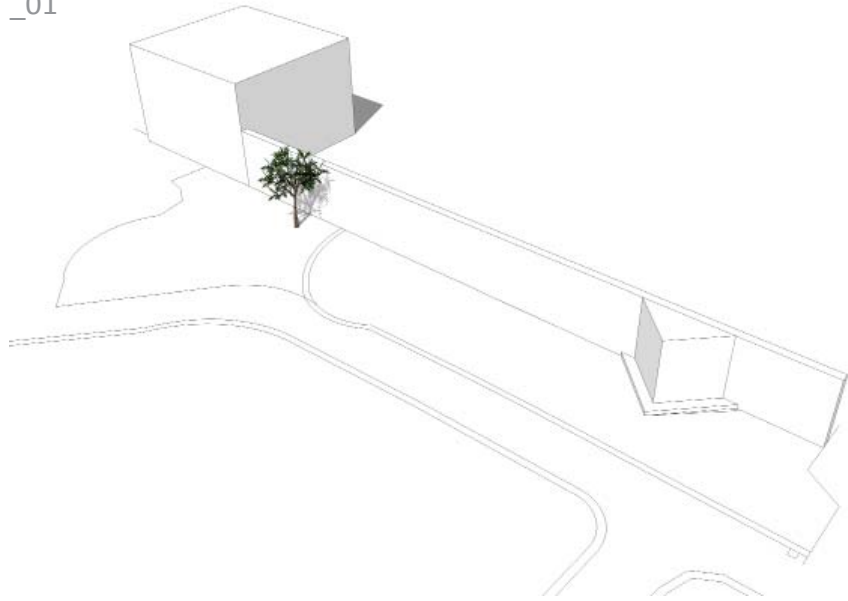


plan

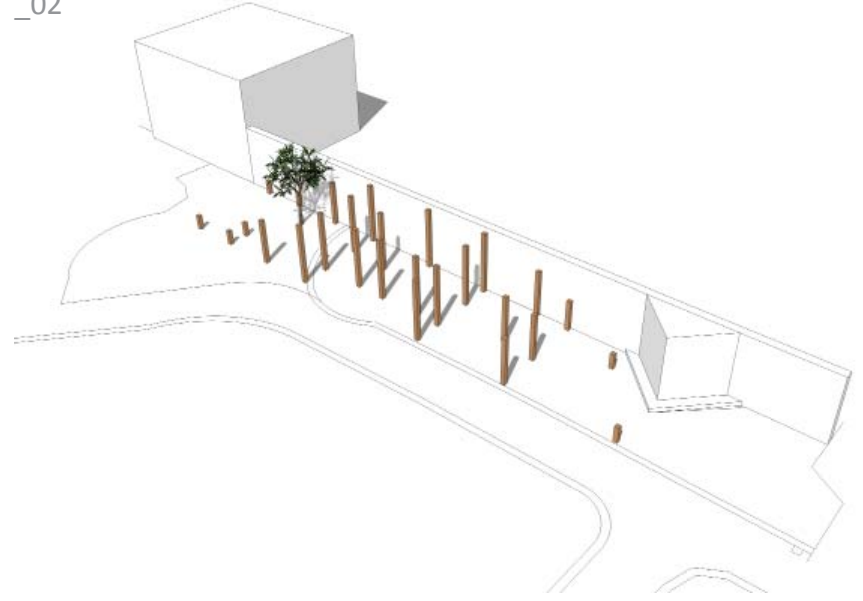


_assembly

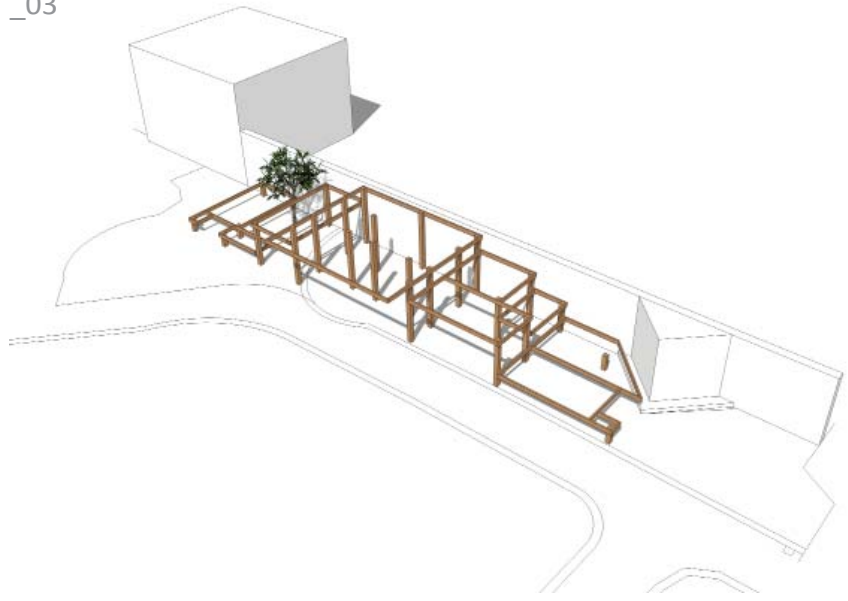
_01



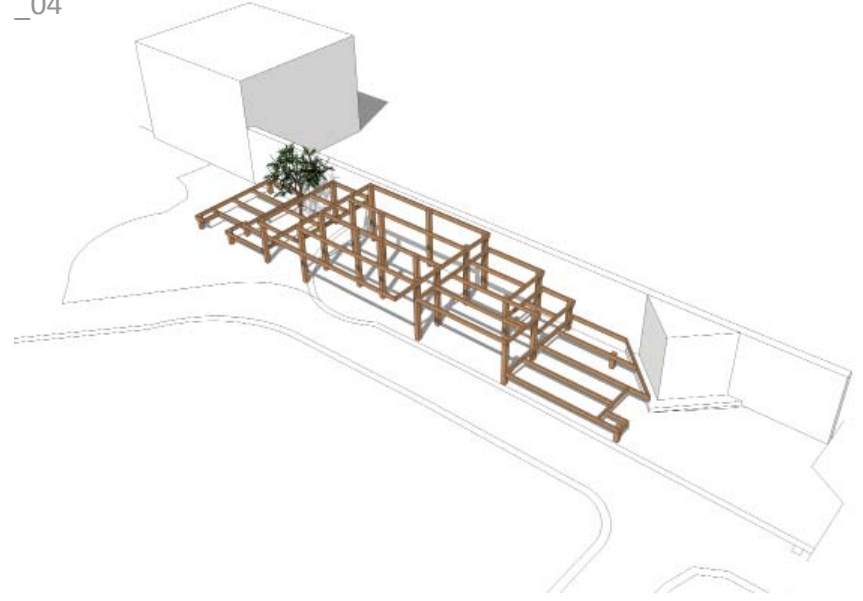
_02



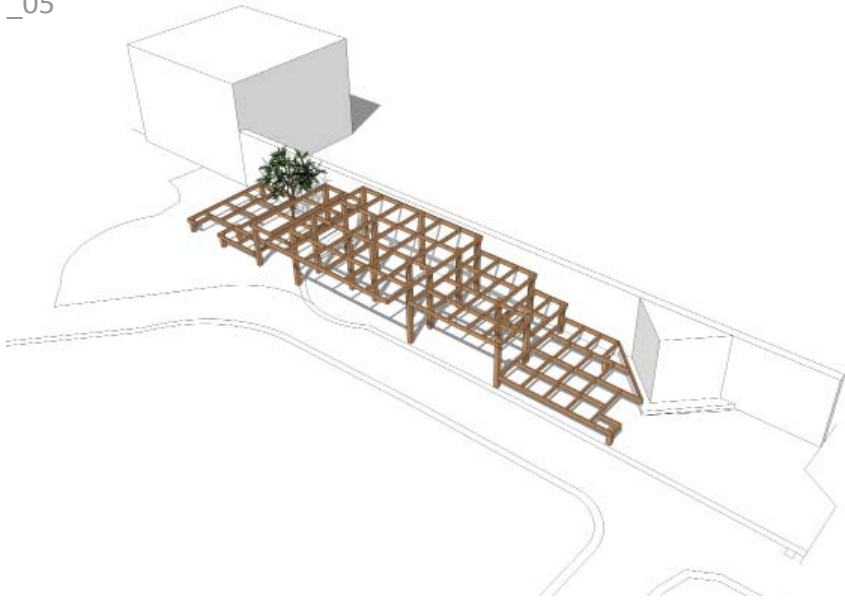
_03



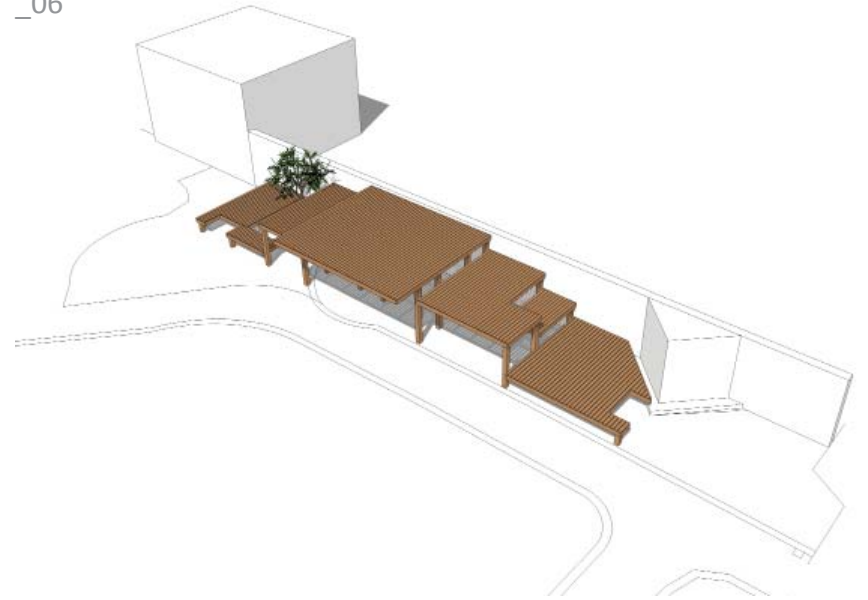
_04



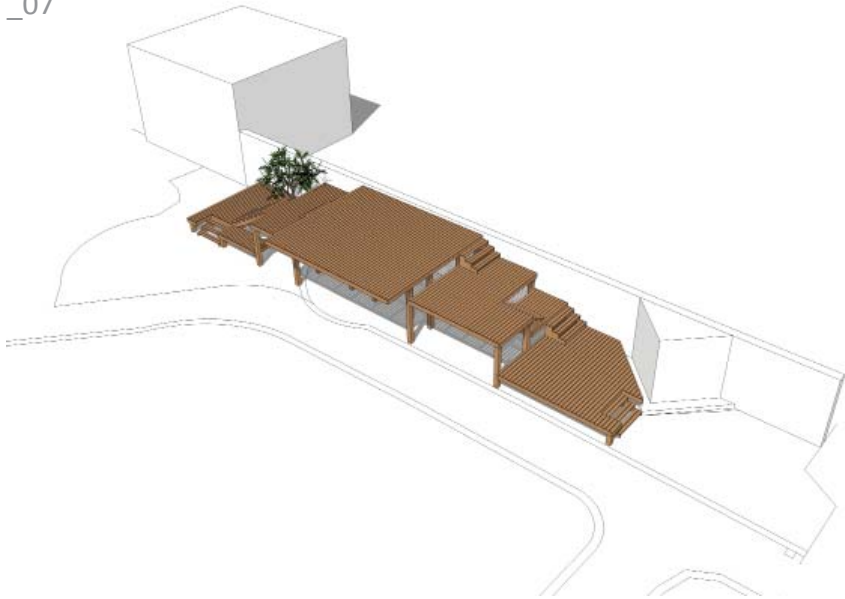
_05



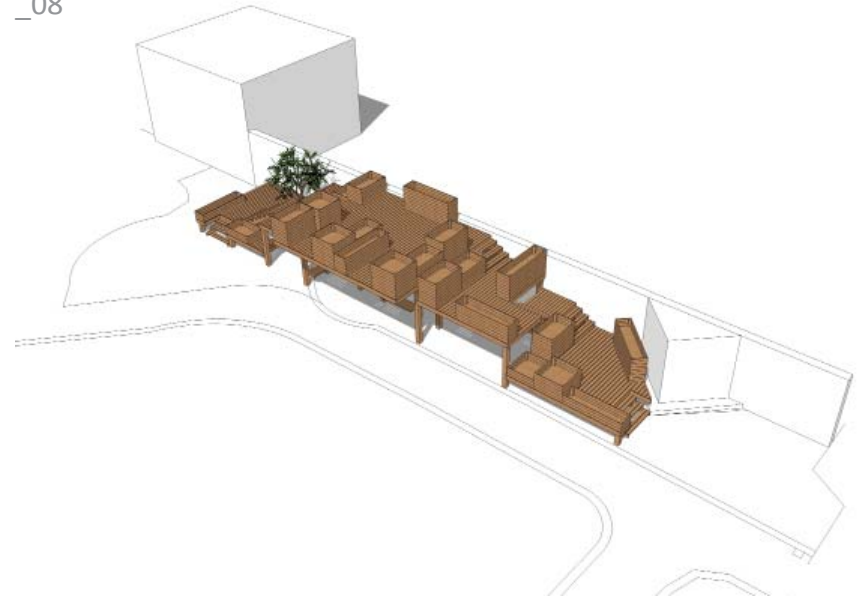
_06



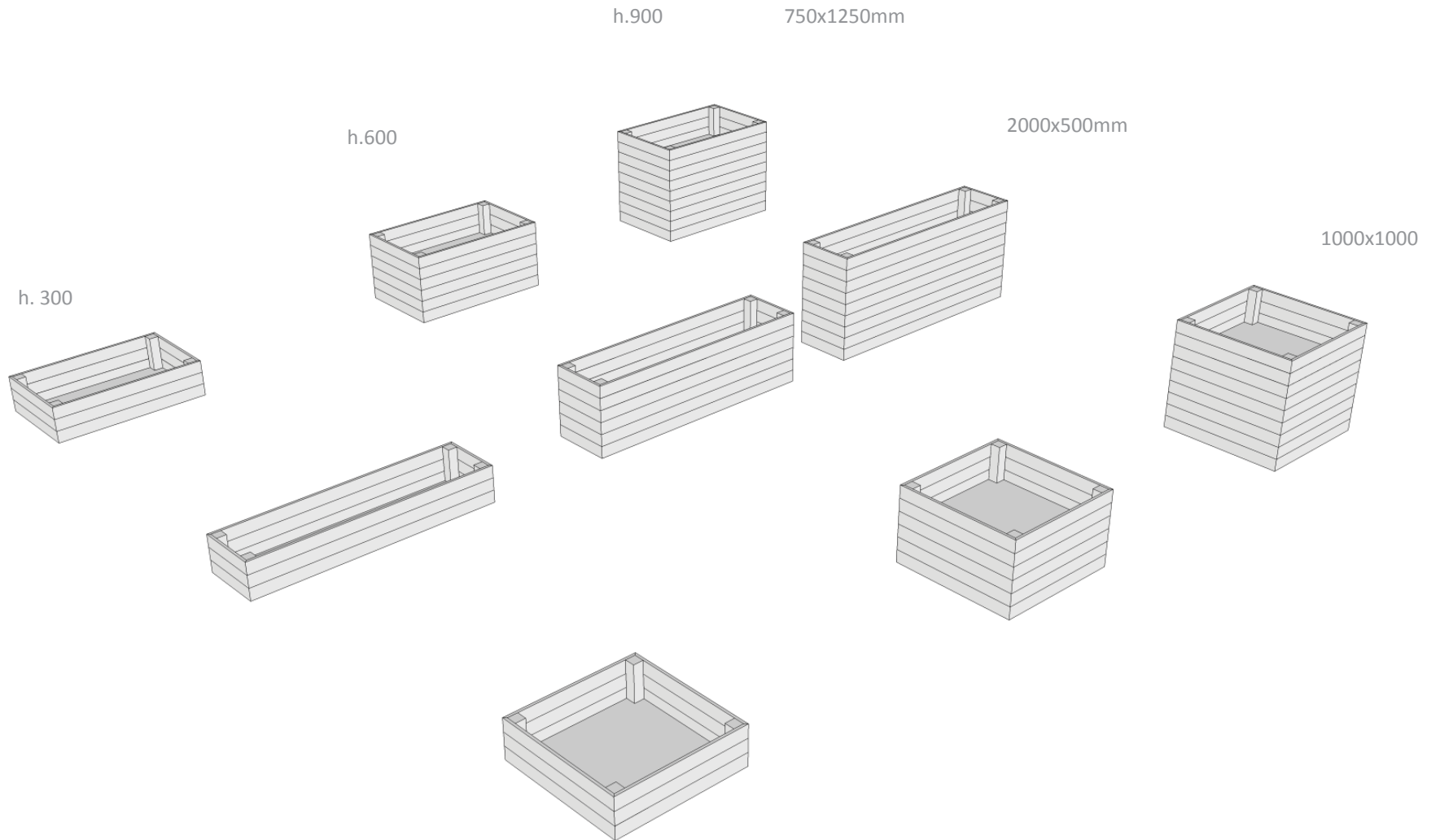
_07



_08



_allotment boxes



_visual

