

HOVERING ALLOTMENT GARDEN

GRENVILLE GARDENS, ISLINGTON



SITE



Grenville Gardens
Grenville Road, N19 4EH
Tollington Ward, North Area Committee
Islington

Islington Council built Grenville Gardens in 1984. FROGG (Friends of Grenville Gardens) was formed August 2010 by Sarah Roth with the encouragement and assistance of Sarah Armstrong, Islington MAGPI Safer Neighbourhoods Team Manager. They are a community organisation, whose aims are the enhancement and maintenance of the park for the benefit of all residents in the area of Finsbury Park. They are a highly diverse and multi-cultural group and meet on a regular basis to discuss neighbourhood problems and issues.





COMMUNAL 3D ALLOTMENT GARDEN

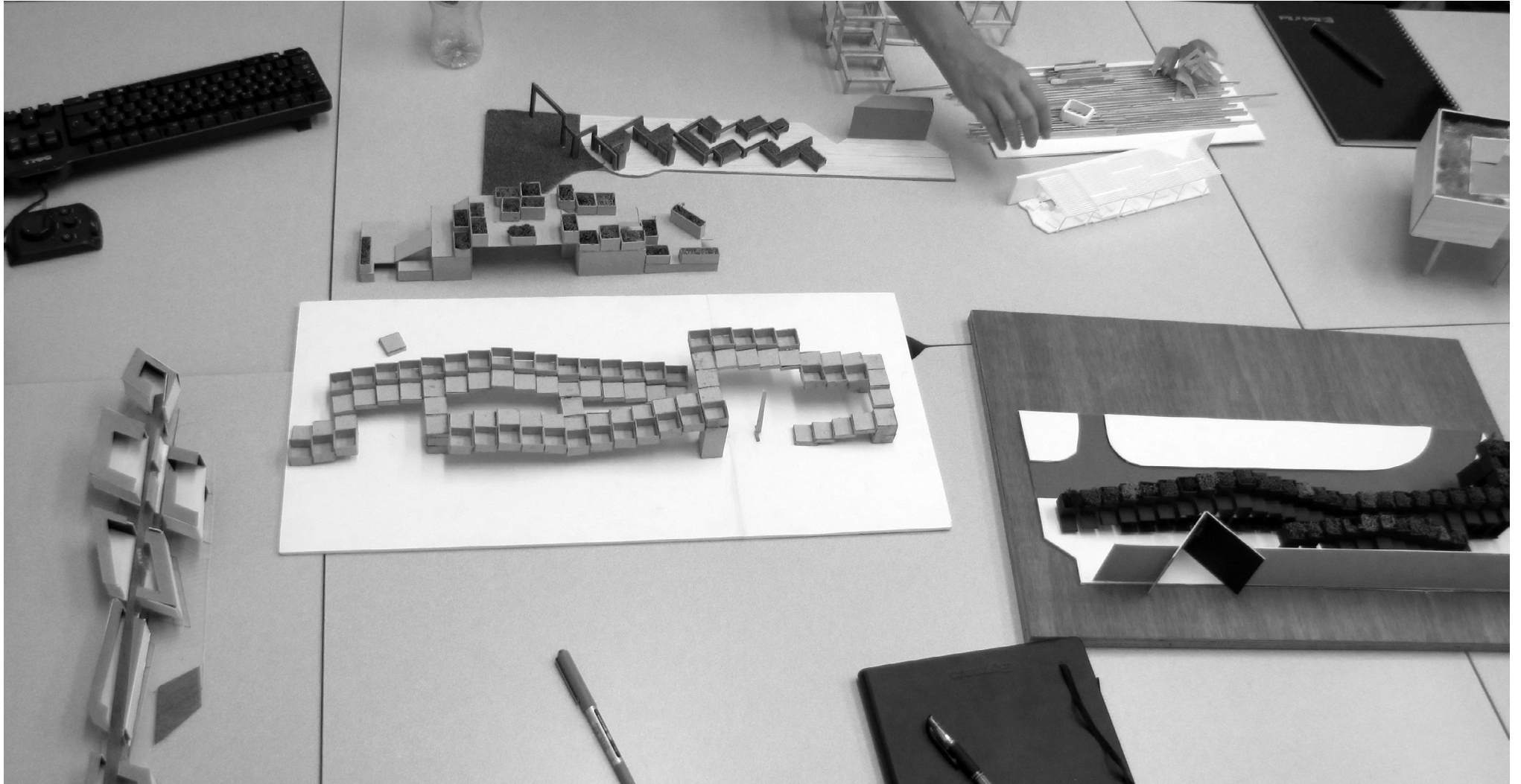
Because of the presence of Japanese Knot-weed on site, the ground must be covered and laid bare for at least two years while the weed is taken care of. Vegetables should be planted in troughs and raised bed boxes on stilts so that they are not in contact with the ground.

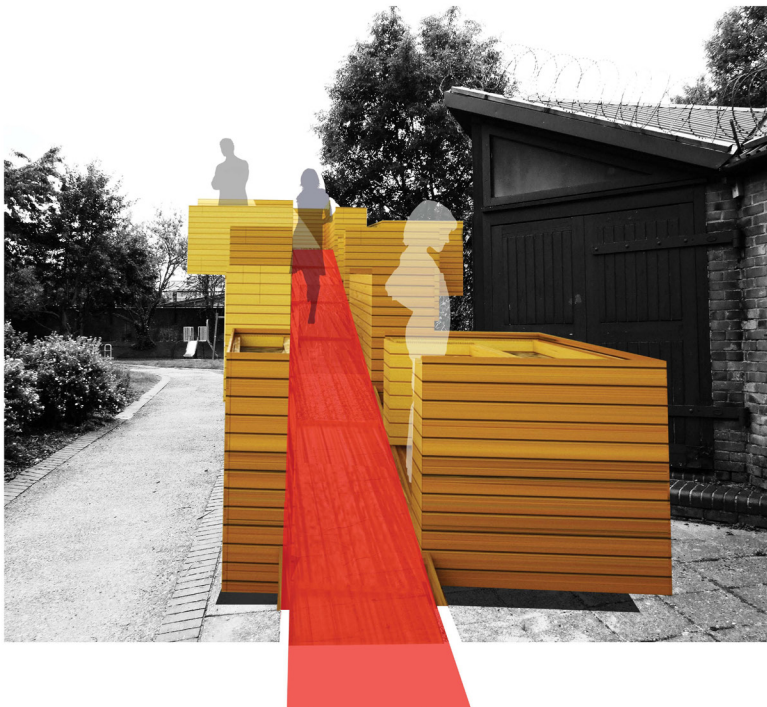
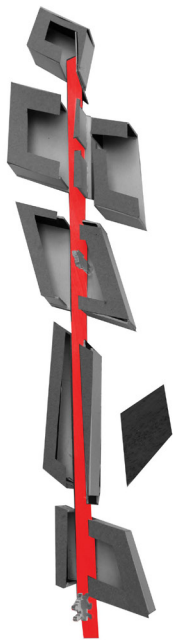
To truly serve all residents and users, vegetables grown in planters at varying heights should be the primary remit. This will enable children, the elderly and disabled residents to fully enjoy and contribute to the project.

In addition, a connection to a watering outlet on the side of the site is to be used and incorporated in the design.

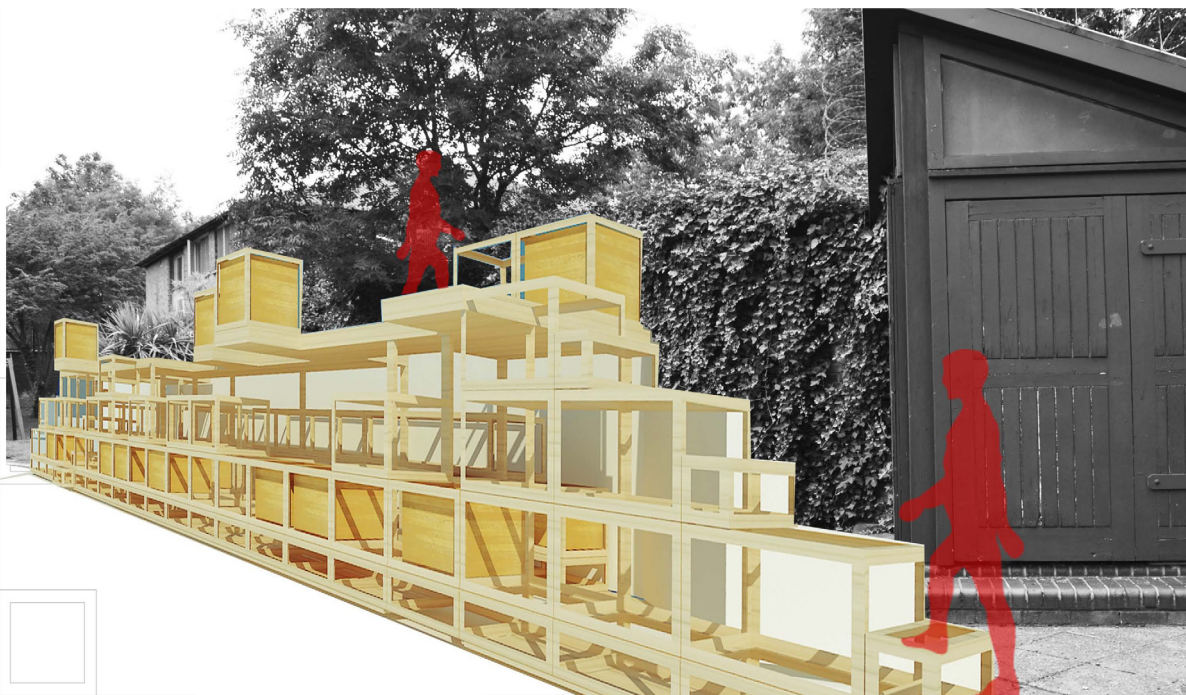
The design proposal requires each individual in the community to be responsible for building their own allotment box. The design team, together with groups of volunteers will create the structure and joints that form an infrastructure for the allotments to be attached to.

PHASE 1 – INDIVIDUALS PROPOSALS





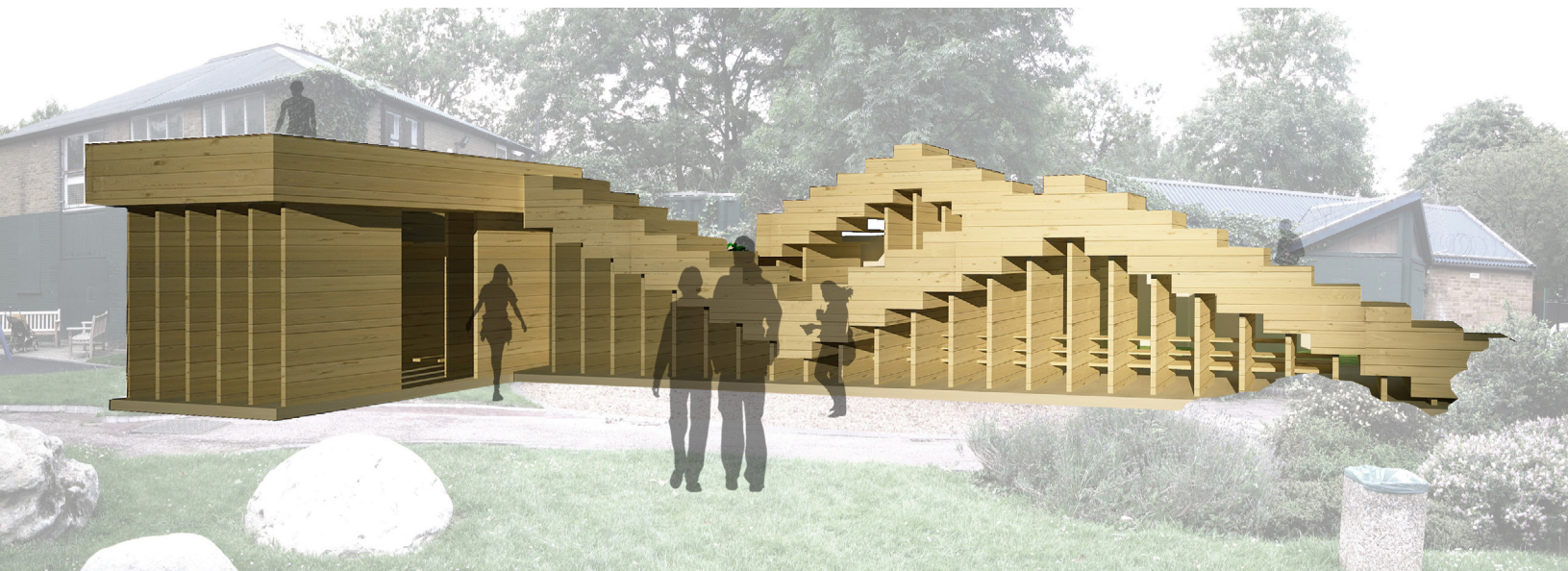
DIMITRI ERISTAVI



NORA AHMETI



ELISA KAUTTO



DENISA GULER

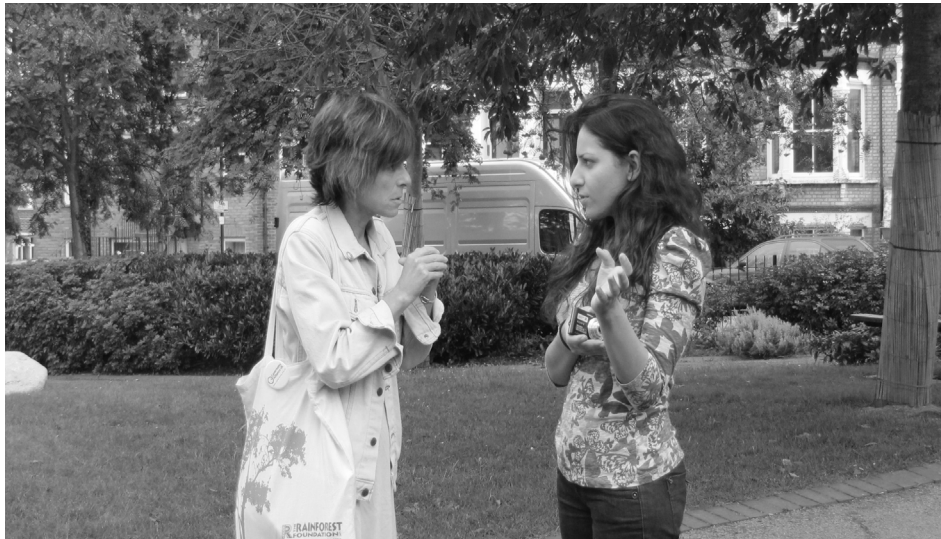


NESMA AL SHERIF

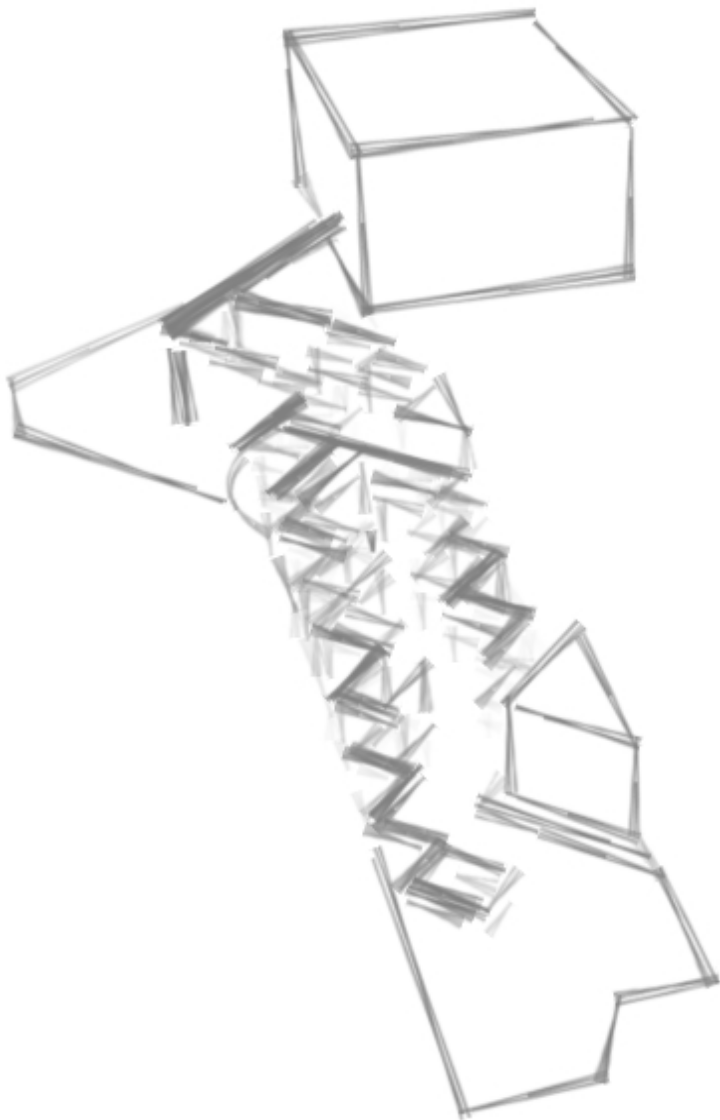


LOUJEINE KAMOUN

PHASE 2 — DESIGN DEVELOPMENT



MOTIVATION



In the framework of a design course in the American Intercontinental University in London, an innovative design process was developed, creating an alternative relationship between designer and community. In the course of ten weeks, intensive use of high tech digital design tools is coupled with client consultations and a craft oriented, bottom up assembly in collaboration with community members, using simple tools available on site.

In a design process that engages with people and the needs of a diverse community, a scheme was developed that can be continued to be used and evolve long after the project ends. The manner in which each individual engages with the design is independent but also part of a larger structure of communal interaction. The intention is to create a micro environment that condenses actual community dynamics on the neighbourhood level to a scale of a small allotment garden.

Similar to early modes of habitation, the form develops bottom up. The entire structure becomes a living entity, opened for change and growth, as more individuals get involved and contribute their part. The role of the designer shifts from the creation of forms to channelling the flows and interests of the individuals within the field of a three dimensional allotment garden.

Digital Design tools are used to incorporate both social structures and material structures in the final design proposal. The final end product creates a feasible design using recycled/reclaimed materials in a self build structure to be realized in collaboration with the community around Grenville Gardens in Islington.

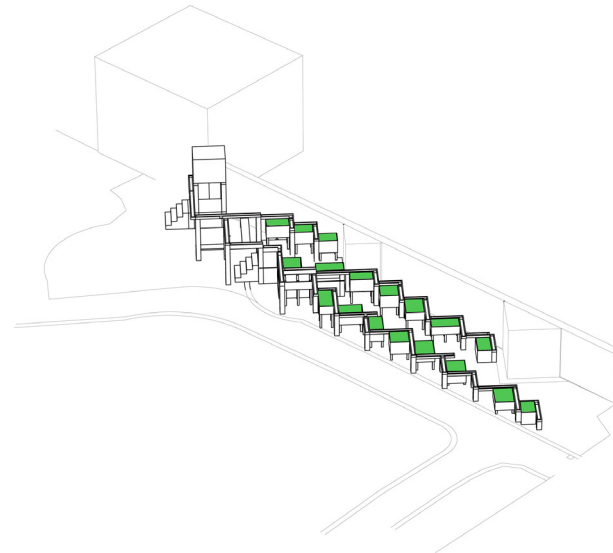
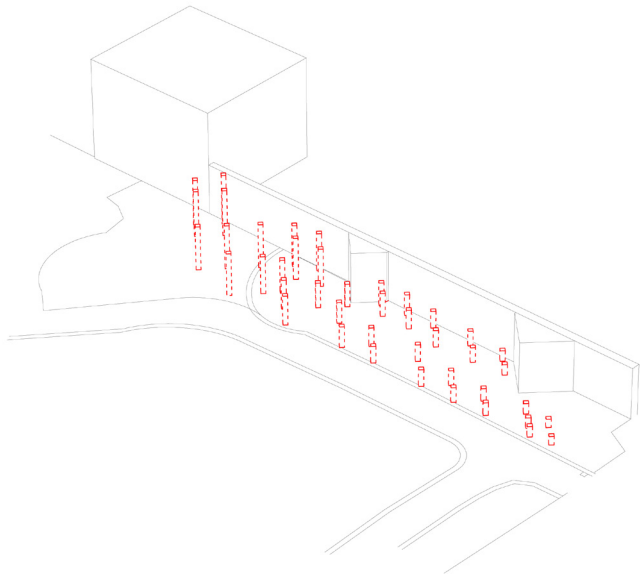
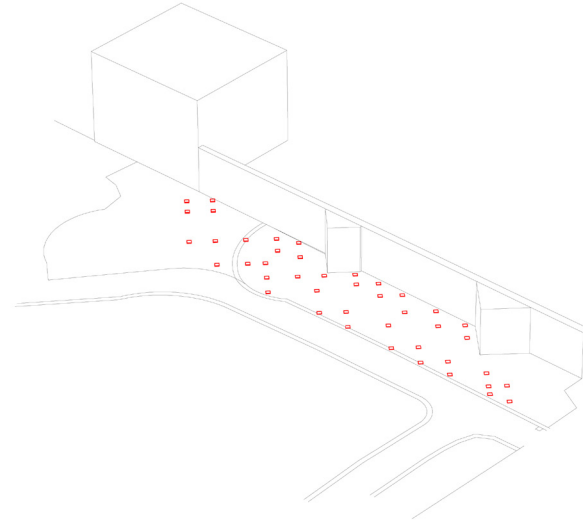
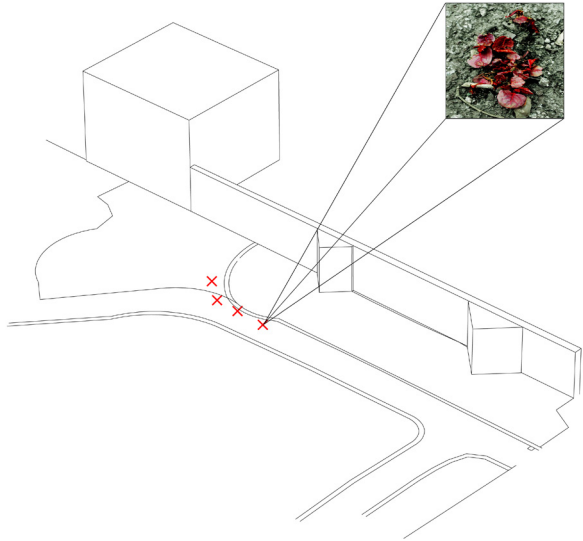
CONCEPT



The concept of a river floodplain was the initial drive of the design. A branching river can distribute the water from a single source to all the allotments in the garden. Similar to the way initial agricultural communities developed on banks of rivers, individuals can choose where they want to place their allotment in relation to the water source.

An inspiration for the manner the water is channelled down is an aqueduct; a method used in antiquity to transport water from a remote source to a desired location, such as a town, city, or agricultural area. It consisted of nothing more than an open canal dug between the river and the city. Water from the river flowed into the city by the force of gravity.

CONCEPT DIAGRAM

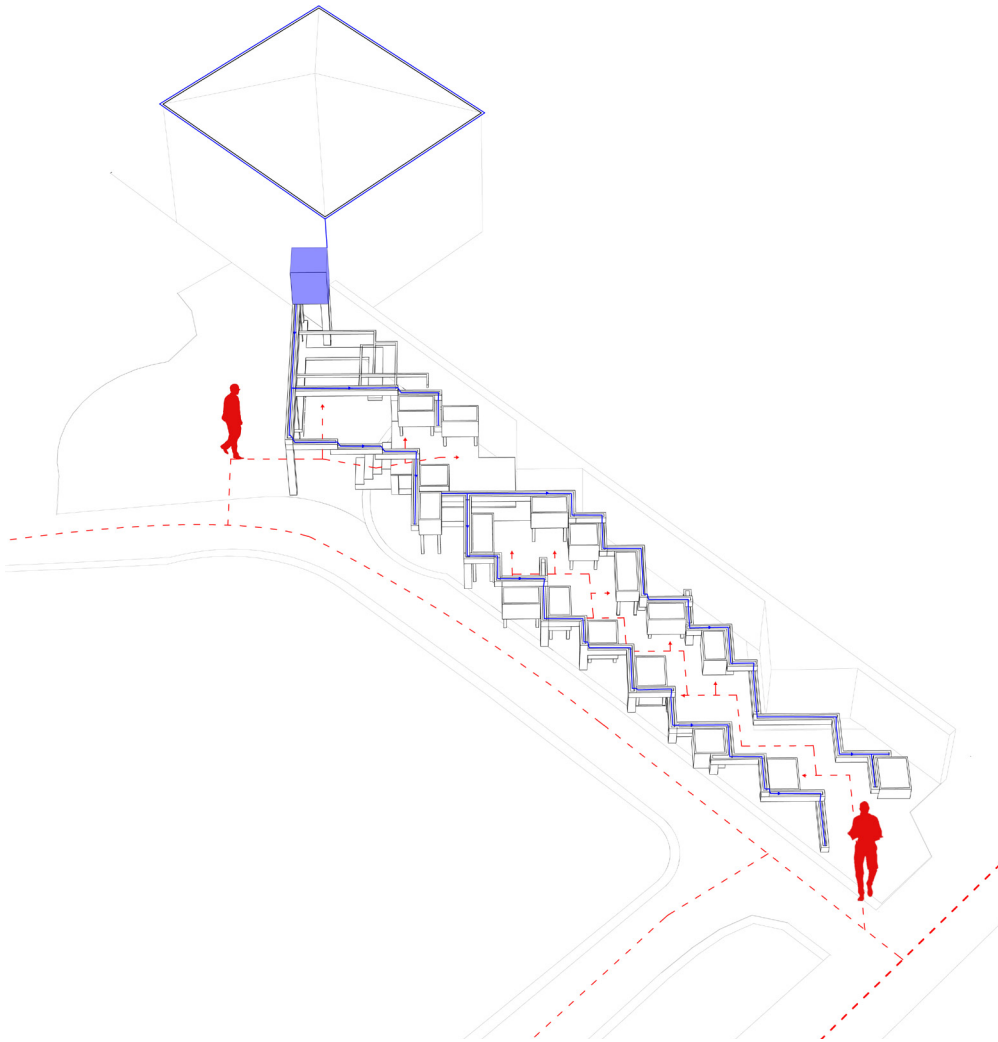


CONTEXT

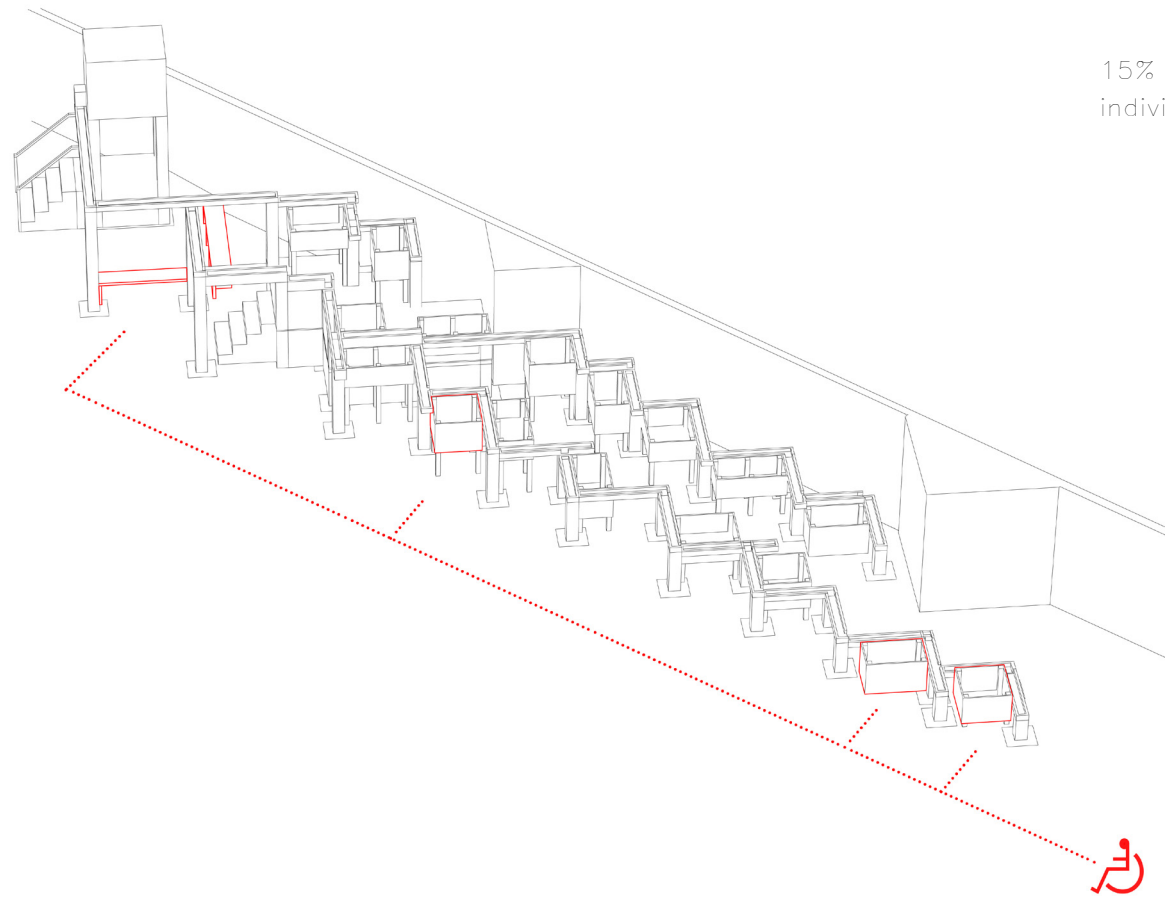
Two forms of flows on site were incorporated in the final design:

Movement of individuals and accesability to the allotments.

Flow of water in branching pattern from the source towards the lower levels of the garden.

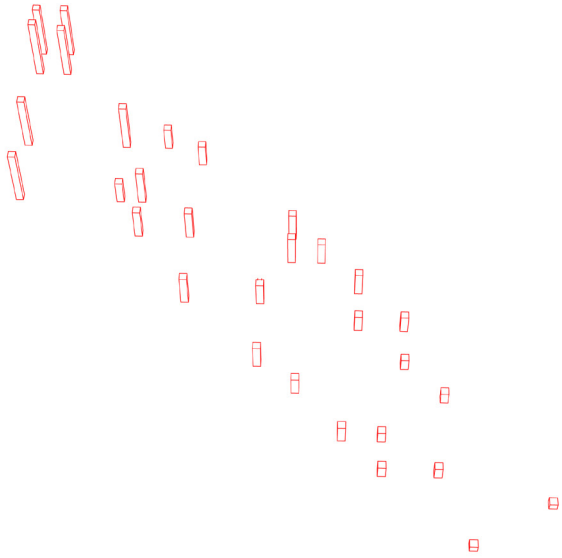


USE AND MOVEMENT OF THE DISABLED



15% of the allotment boxes have easy access for the disabled individuals in the community.

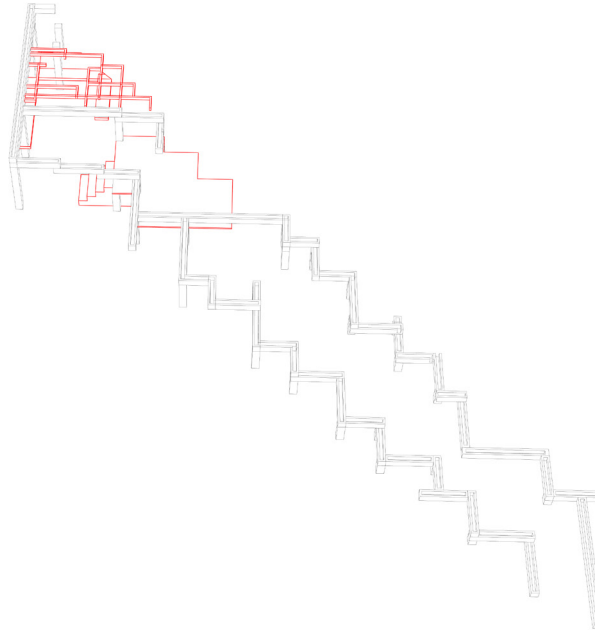
DEVELOPMENT



STEP 1

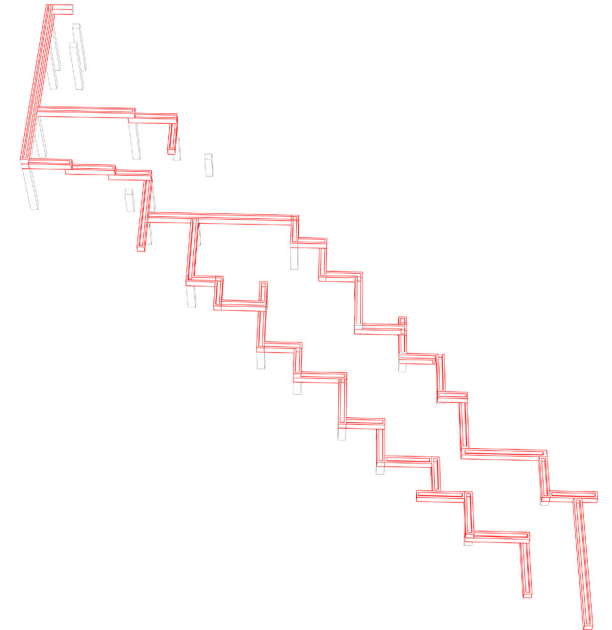
Holes are dug in the ground for the concrete to be cast in.

Columns supporting the ducts will be fixed in the concrete.



STEP 2

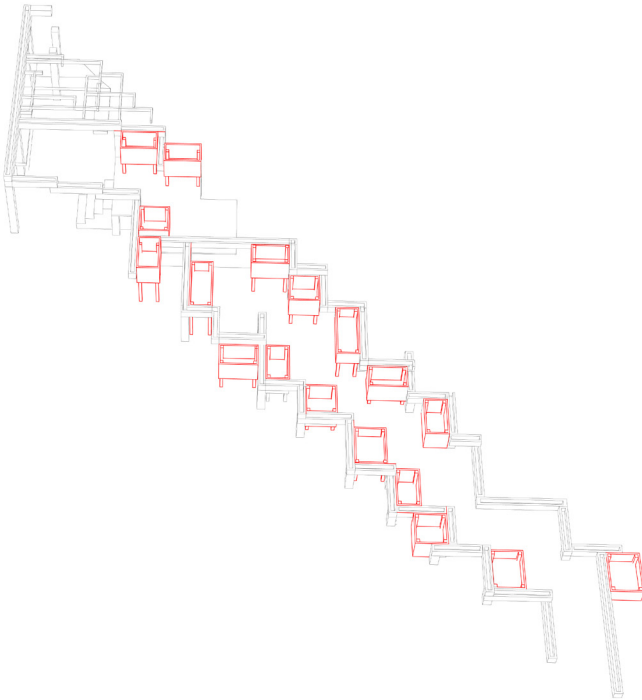
The platform, lockable sheds and seating area will be built.



STEP 3

The ducts will be built on site and fixed onto the columns.

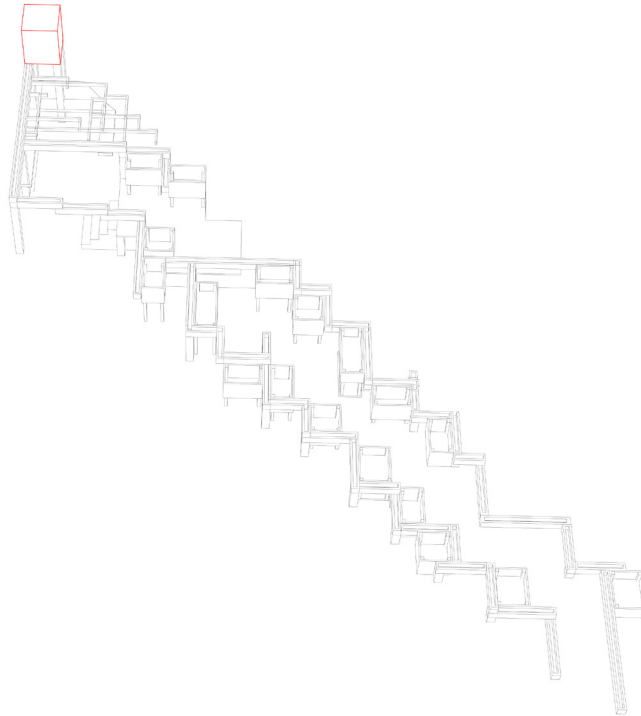
DEVELOPMENT



STEP 4

The frames for the allotment boxes will be installed.

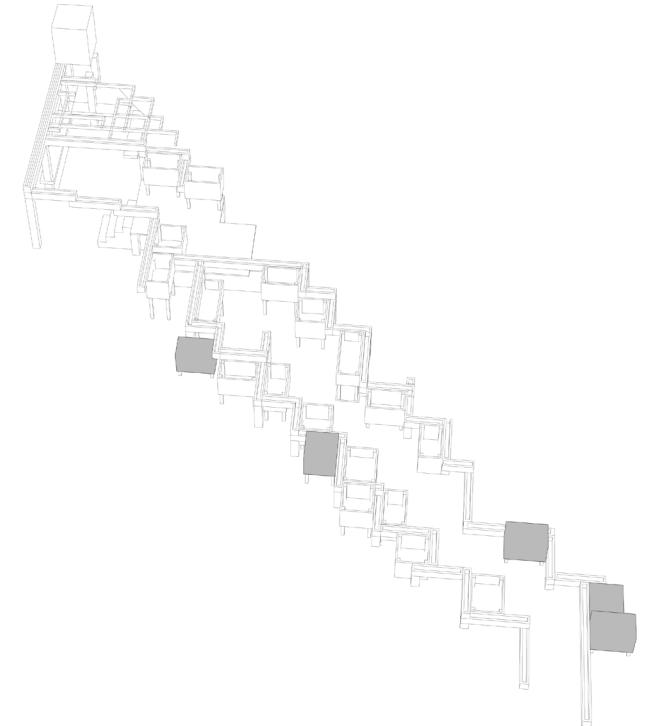
Allotment boxes will be built and inserted in the frame.



STEP 5

The box for the water tank will be built and placed in position .

The structure will be varnished and the ground will be covered with gravel.



POST PHASE 3

After the main construction phase, the structures can still evolve, by branching out more and increasing the number of allotment boxes.

PROPOSAL



PERSPECTIVE



SIGN OFF



PHASE 3 — WORK ON SITE



INDIVIDUALS INVOLVED

AIU:

Ittai Frank – Course Director

Mark Gower – Coordination between individuals involved

Onur Ozkaya – Fabrication Consultant

Design Team:

Nora Ahmeti, Nesma Alsherif, Dimitri Eristavi, Denisa Guler, Loujeine Kamoun, Elisa Kautto

Buro Happold:

Luke Epp – Structural Engineer

FROGG (Friends of Grenville Gardens):

Sarah Roth – Chair

Claire Needham – Alternate contact

Sandie Munro – Treasurer/ Alternate contact

Islington Council:

Sarah Armstrong – Islington MAGPI Safer Neighbourhoods Team Manager

Shan Burges – Green Space: North Area Parks manager/ Environment and regeneration

Lucy Riley – Green Space: Project Development officer

For more information about the project, visit <http://bottomupdesignbuild.wordpress.com>